

# Test Report



## CLIENT CONFIDENTIAL

**Client** Alu Rehab AS

**Test Item** Netti III HD Dynamic (36 kg)

**Test** ISO 7176/19 Wheelchair

**Millbrook Report No.** 14/0260

**Millbrook Project No.** CR0175-009-01

**Millbrook Test No.** S12968

**Author:**

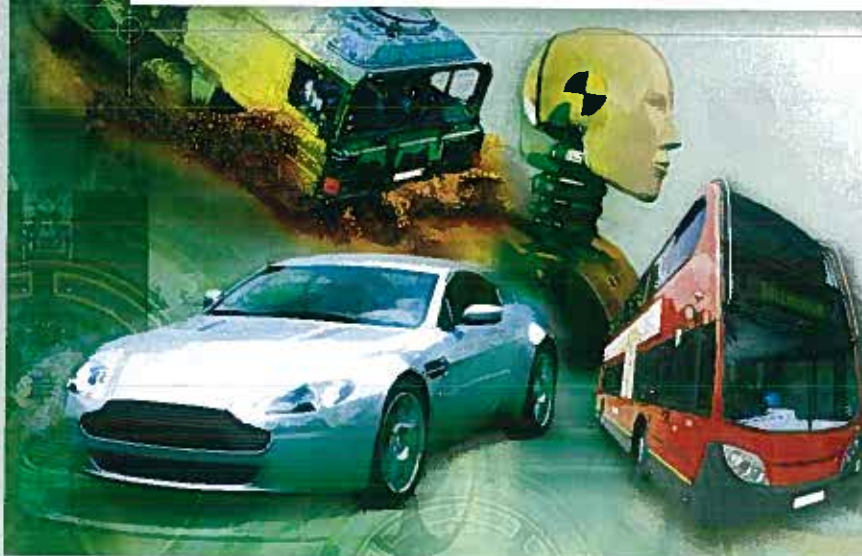
James Kelly  
Engineer

**Approved:**

Simon Jones  
Principal Engineer

**Date:**

31st March 2014



Millbrook Proving Ground Ltd  
Millbrook, Bedford, MK45 2JQ, UK  
Tel: +44 (0)1525 404242  
Fax: +44 (0)1525 403420  
Email: [info@millbrook.co.uk](mailto:info@millbrook.co.uk)  
[www.millbrook.co.uk](http://www.millbrook.co.uk)

This test report shall not be reproduced, except in full, without written approval of Millbrook

## Test Results ISO 7176/19

### Section 5.2 - Dynamic Performance Requirements

<b>Test No:</b> S12968 <b>Client:</b> Alu Rehab AS <b>Wheelchair:</b> Netti III HD Dynamic (36kg) <b>Occupant:</b> Hybrid II 50th %ile (76 kg) <b>Front Restraints:</b> Unwin OF03 <b>Rear Restraints:</b> Unwin OR02 <b>Occupant Restraint:</b> Unwin OCR02	<b>RESULTS</b>
<b>5.1 During the Test</b>	
a) Horizontal ATD and wheelchair excursion limits as per limits shown in Table 3:-	
Was the horizontal movement of the test wheelchair P- Point ( $X_{ss}$ ) less than 200 mm. ( $\pm 5$ mm)	PASS 45 mm
Was the horizontal movement of the dummy Knee ( $X_{knee}$ ) less than 375 mm. ( $\pm 5$ mm)	PASS 290 mm
Was the forwards horizontal movement of the Dummy Head ( $X_{headF}$ ) less than 650 mm. ( $\pm 5$ mm)	PASS 424 mm
Was the rearwards horizontal movement of the Dummy Head ( $X_{headR}$ ) greater than -450 mm. ( $\pm 5$ mm)	PASS -324 mm
b) Was the ratio $X_{knee}/X_{ss} > 1.1:1$	PASS 6.48 : 1
c) Did the batteries of powered wheelchairs, or their surrogate parts:-	
I. move outside of the wheelchair footprint	N/A
II. move into the wheelchair user's space	N/A
<b>5.2 Post Test</b>	
a) Did the wheelchair remain upright on the test platform and did the ATD remain in a seated posture in the test wheelchair with a torso angle $> 45^\circ$	PASS
b) Did the wheelchair securement points show visible signs of material failure	PASS
c) Did any components of a mass greater than 100g become detached from the wheelchair	PASS
d) Did any occupant contactable components fragment or separate with an edge of less than 2mm	PASS
e) Did any primary load carrying components of the wheelchair show any visible signs of failure	PASS
f) Did any 'tilt in space' locking mechanisms show signs of failure	PASS
g) Was the ATD released from the wheelchair without the use of tools	PASS
h) Was the wheelchair released from the restraint system without the use of tools	PASS
i) Was the average decrease of H-Point height relative to the wheelchair platform less than 20% of the pre-test height	PASS
The wheelchair satisfied the Dynamic Test requirements of ISO/NP 7176/19 of 7th July 2008	<b>PASS</b>