



Product Service

CERTIFICATE

No. Z1 15 12 22430 043

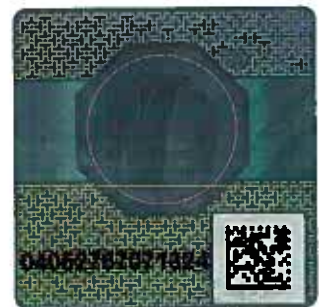
Holder of Certificate: Alu Rehab ASBedriftsvegen 23
4353 Klepp Stasjon
NORWAY**Production Facility(ies):** 57370**Certification Mark:****Product:** Standard wheelchairs
Manual wheelchairs**Model(s):** Manual wheelchair type:
Netti III / Netti III HD

Parameters:	Netti III	Netti III HD
total length incl. footrests:	1100 mm	1100 mm
total length without footrests:	900 mm	900 mm
max. user weight:	145 kg	160 kg

more parameters: see enclosures

Tested according to: DIN EN 12183:2014

The product was tested on a voluntary basis and complies with the essential requirements. The certification mark shown above can be affixed on the product. It is not permitted to alter the certification mark in any way. In addition the certification holder must not transfer the certificate to third parties. See also notes overleaf.

Test report no.: 713065466-1**Valid until:** 2020-12-07**Date,** 2015-12-09  (Torsten Zimmer)

Page 1 of 2



Product Service

Enclosure to certificate no.: Z1 15 12 22430 043

Model identification for the manual wheelchairs**Type: Netti III / Netti III HD**

	Netti III	Netti III HD
total length incl. footrests:	1100 mm	
total length without footrests:	900 mm	
width:	590 - 740 mm	740 - 840 mm
height:	1120 mm	
seat width:	350, 380, 400, 430, 450 and 500 mm	500, 550 and 600 mm
seat depth:	400 - 500 mm	400 - 500 mm
seat height:	400 - 500 mm	
backrest height:	480 mm (600 mm with back extension)	
seat plane angle:	- 9° - +16° (manually adjustable)	
backrest angle:	86° - 133° (manually adjustable)	
max. user weight:	145 kg	160 kg
brake system:	knee lever brake (user brake)	
back wheels:		
- size	20 x 1", 22 x 1", 24 x 1" and 24 x 1 ³ / ₈ "	24 x 1 ³ / ₈ "
- tyres	Solid PU (puncture proof)	Solid PU (puncture proof)
- adjustable	Yes	Yes
- fixation	Quick release	Quick release
front wheels:		
- size	Ø 125 x 27, Ø 150 x 27 and Ø 175 x 33 mm	Ø 175 x 44 mm
- tyres	Solid PU (puncture proof)	Solid PU (puncture proof)
- adjustable	Yes	Yes
- fixation	Quick release	Quick release
frame material:	aluminum, steel	aluminum, steel
armrest:	height adjustable and removable	
legrest:	height adjustable, angle adjustable and removable	
anti tip device	adjustable	

Department: MHS5 / me
Date: 2015-12-09